

MISCELLANEOUS INDEX

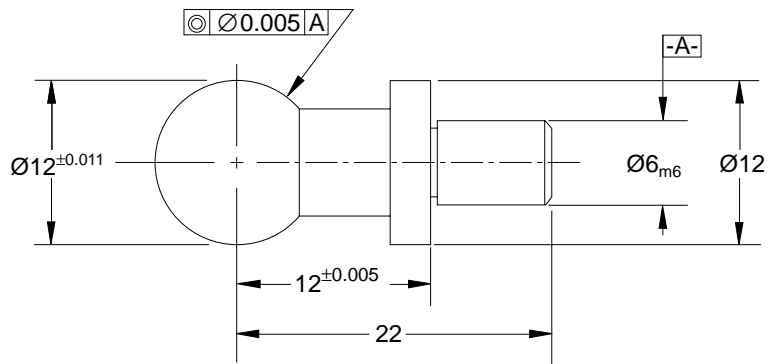
PAGE	DATE	SERIES	DESCRIPTION
M-1	08/01/11		Miscellaneous Index
M-2	04/16/96	M01	Tooling Ball
M-3	04/16/96	M02	Scrap Chute Hook and Retainer Bracket
M-4	01/03/95	M03	Scrap Chute Chain Hooks
M-5	01/03/95	M04, M05 & M15	Scrap Chute Retainer Brackets
M-6	01/03/95	M06 & M16	Scrap Chute Storage/Hinge Brackets
M-7	01/03/95	M07	Scrap Chute Hinge & Pins
M-8	12/15/00	M08 & M09	Rectangular Key
M-9	12/15/00	M10	Stop Blocks
M-10	08/23/06	Discontinued	Flange Stripper with Coil Spring
M-11	12/15/00	M12	Flange Stripper with Gas Spring
M-12	08/23/06	Discontinued	Flange Stripper Assembly
M-13	12/15/00	M13	Flange Stripper Asm - Locating Cone Unit
M-14	08/23/06	Discontinued	Flange Stripper Asm - Guide Shaft
M-15	08/23/06	Discontinued	Flange Stripper Asm - Bushing Block
M-16	08/23/06	Discontinued	Flange Stripper Asm - Retainer & Guide Block
M-17	10/19/01	M17	Stock Crowder
M-18	08/01/11	Discontinued	Blank Support
M-19	10/07/05	M190001	Scrap Flipper
M-20	08/23/06	M200001	Scrap Chute Bracket
M-21	06/07/07	M210075 - 210150	18 MM Blank Sensor (M21 Series)
M-22	09/16/08	M22 SERIES	Flange Stripper Air Activated
M-23	10/20/10	M23	Lift Rail Assembly
M-24	10/20/10	M23	Lift Rail Cable Stud & Mounting Plate
M-25	10/20/10	M23	Lift Rail Cable Stud Mounting Bracket & Bumper Plate
M-26	10/20/10	M23	Lift Rail Shock Absorber
M-27	08/01/11	M27	Blank Support

TOOLING BALL

(M01 SERIES)

Stamping

04/16/96



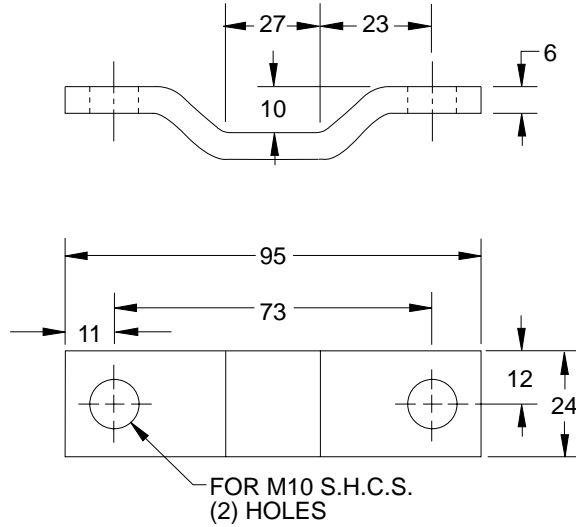
NAAMS CODE
M011222

NOTES & SPECIFICATIONS:

Material, hardened steel

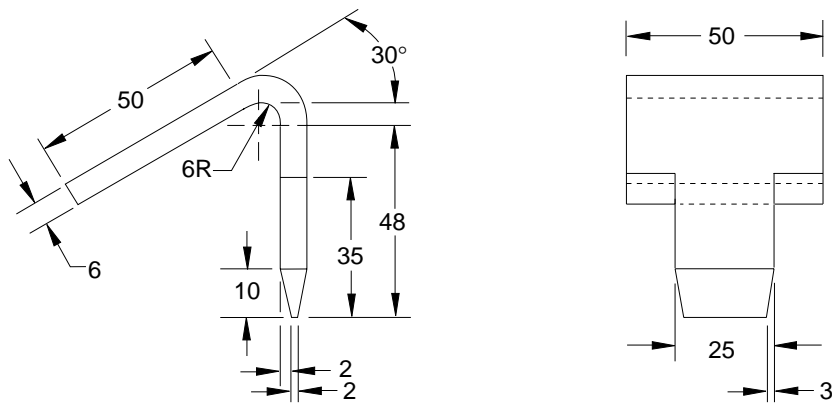
SCRAP CHUTE HOOK AND RETAINER BRACKET

(M02 SERIES)



SCRAP CHUTE RETAINER BRACKET

NAAMS CODE
M020001



SCRAP CHUTE HOOK

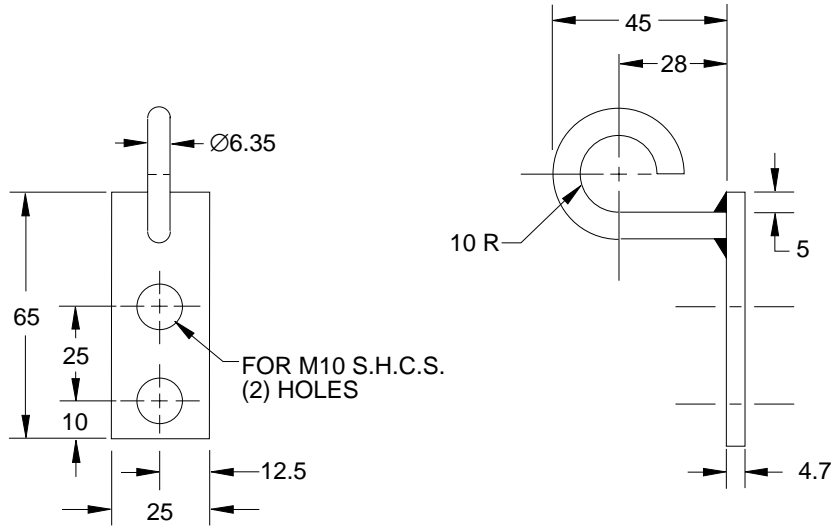
NAAMS CODE
M020002

SCRAP CHUTE CHAIN HOOKS

(M03 SERIES)

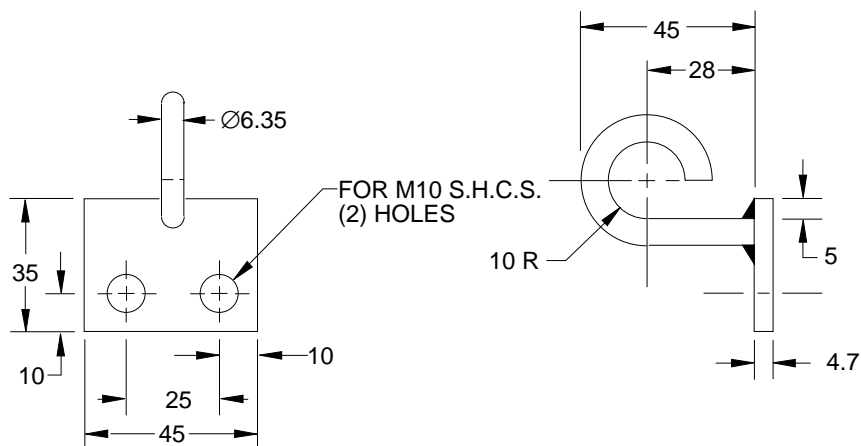
Stamping

01/03/95



VERTICAL CHAIN HOOK

NAAMS CODE
M030001



HORIZONTAL CHAIN HOOK

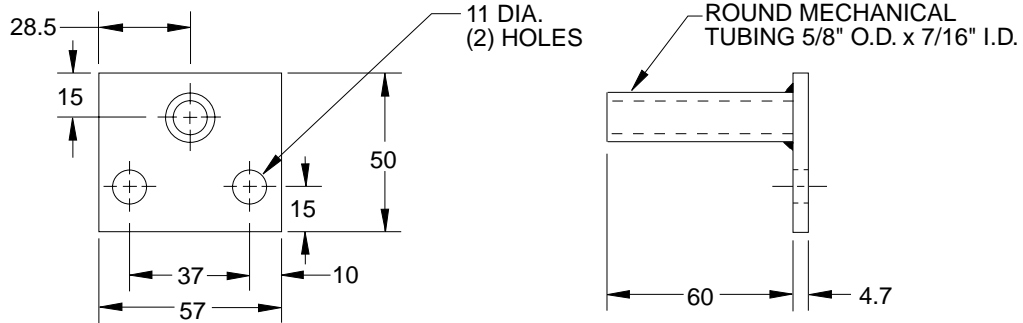
NAAMS CODE
M030002

SCRAP CHUTE RETAINER BRACKETS

(M04, M05 & M15 SERIES)

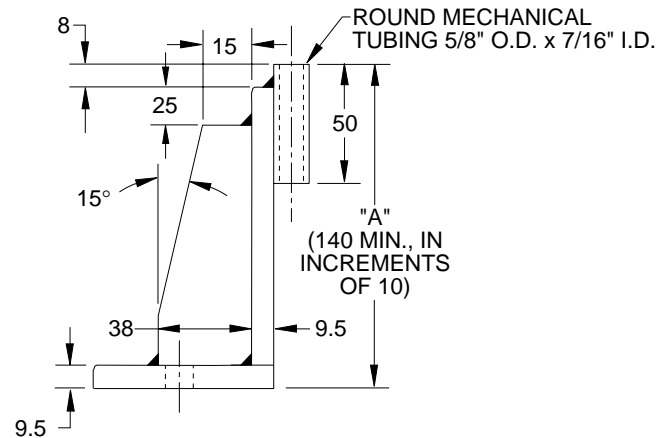
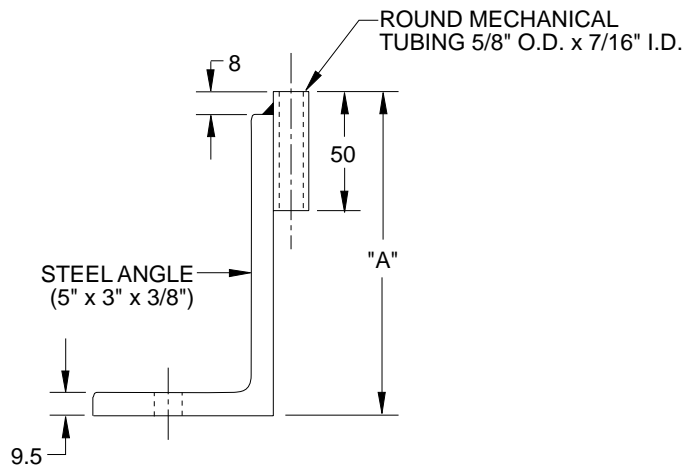
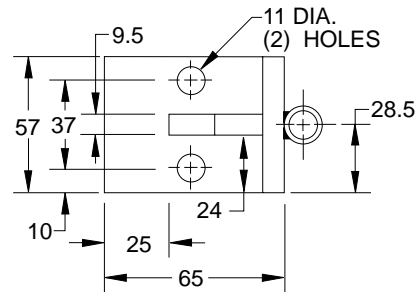
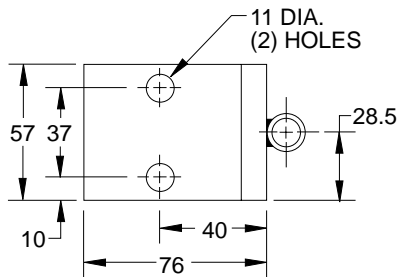
Stamping

01/03/95



STUB RETAINER BRACKET

NAAMS CODE
M040001



VERTICAL RETAINER BRACKET

VERTICAL EXT'D. RETAINER BRACKET

NAAMS CODE	"A"	NAAMS CODE	"A"
M050060	60	M050100	100
M050070	70	M050110	110
M050080	80	M050120	120
M050090	90	M050130	130

NAAMS CODE
M150XXX

XXX = LENGTH
EX: M150140 = 140 LENGTH

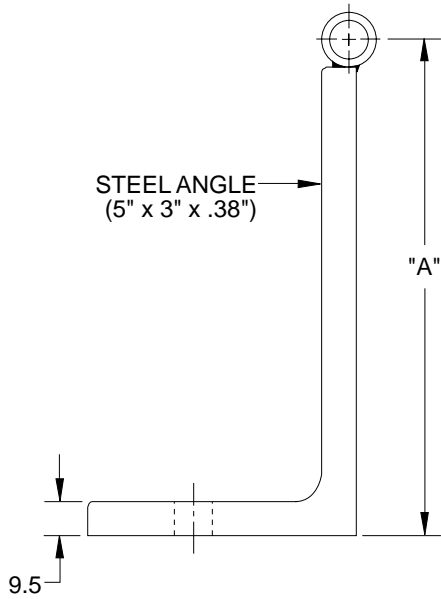
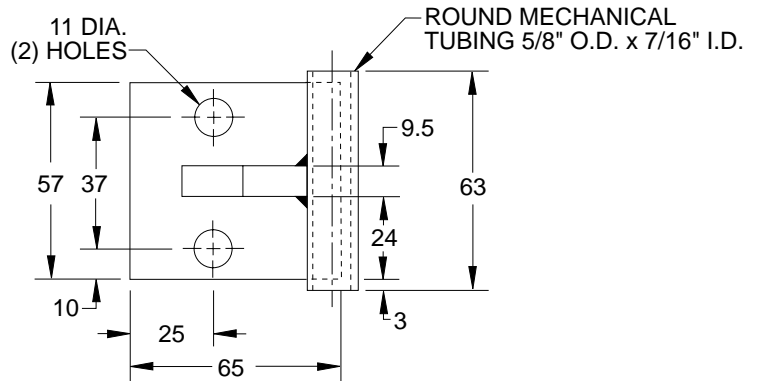
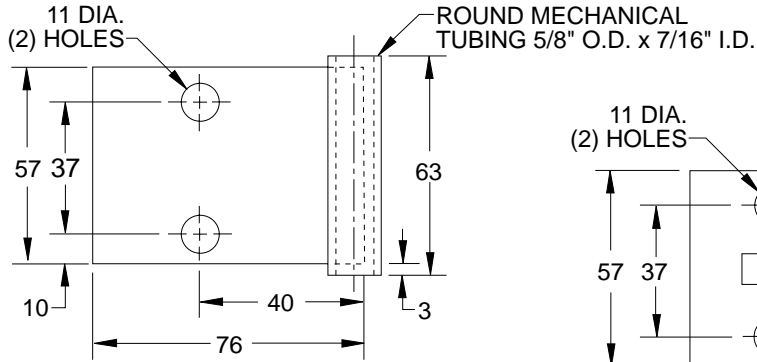
SCRAP CHUTE STORAGE/ HINGE BRACKETS

(M06 & M16 SERIES)

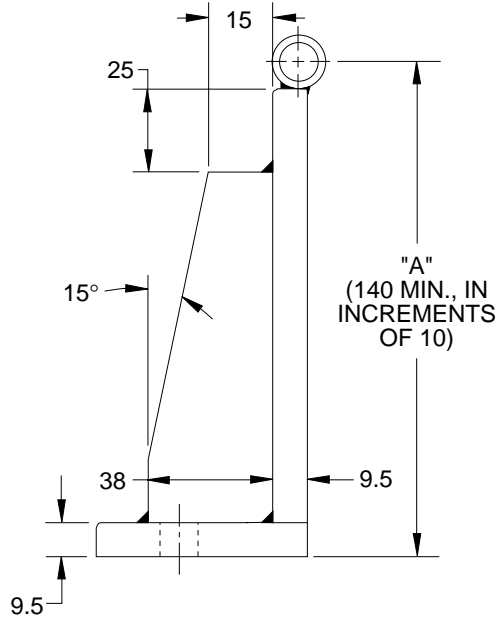


Stamping

01/03/95



**HORIZONTAL STORAGE OR
HINGE BRACKET**



**HORIZONTAL EXTENDED STORAGE OR
HINGE BRACKET**

NAAMS CODE	"A"
M060060	60
M060070	70
M060080	80
M060090	90
M060100	100
M060110	110
M060120	120
M060130	130

**NAAMS
CODE
M160XXX**

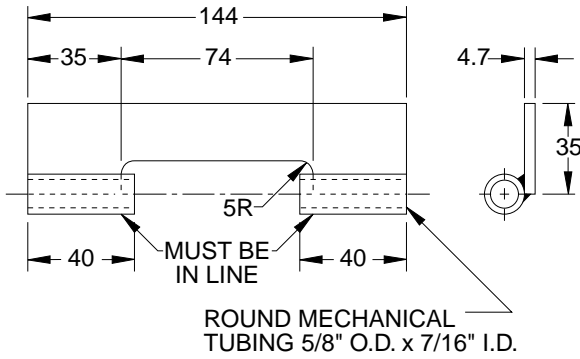
XXX = LENGTH
EX: M160140 = 140 LENGTH

SCRAP CHUTE HINGE & PINS

(M07 SERIES)

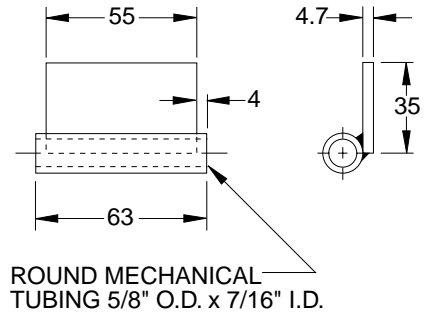
Stamping

01/03/95



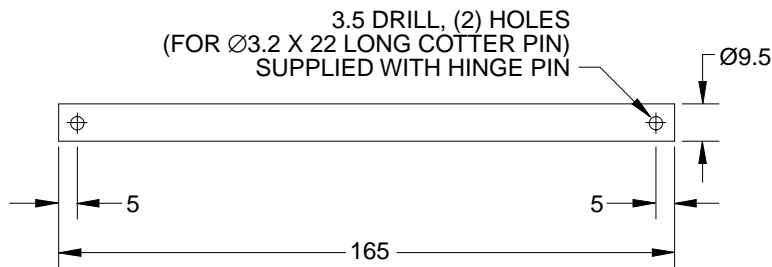
DUAL HINGE

NAAMS CODE
M070001



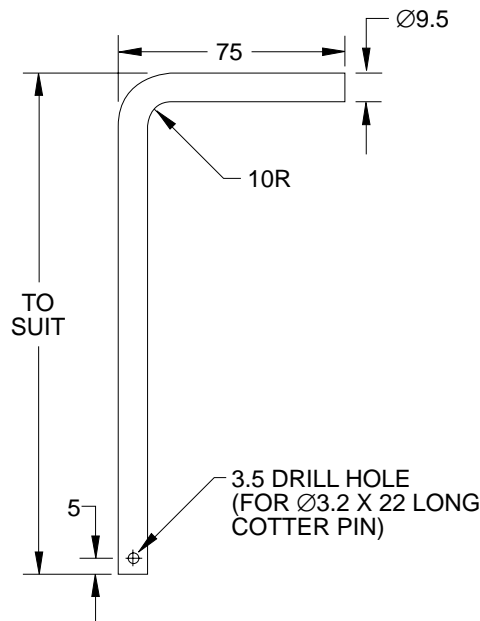
HINGE OR PIN GUIDE

NAAMS CODE
M070002



HINGE PIN

NAAMS CODE
M070003



STORAGE PIN

NAAMS CODE
M070004

KEY - RECTANGULAR

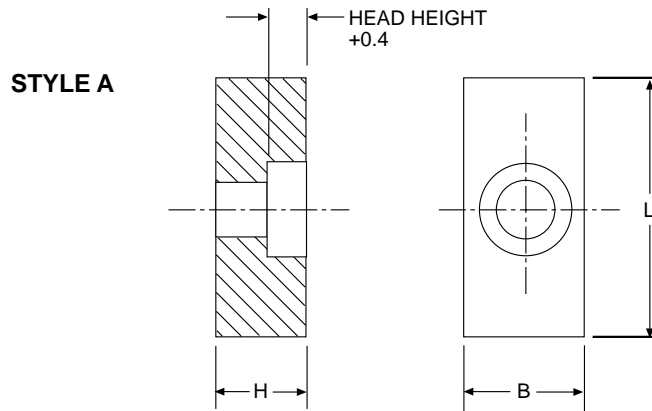
(M08 & M09 SERIES)

GLOBAL STANDARD COMPONENTS

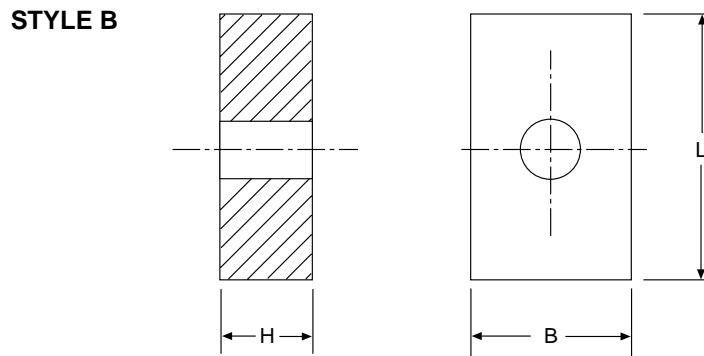


Stamping

12/15/00



NAAMS CODE	L ± 0.3	B (h9) X H	SOCKET HEAD CAP SCR. REQ'D
M082008	80	20 X 20	M8 X 25
M082205	50	22 X 14	M8 X 20
M082208	80		
M082210	100		
M082405	50	25 X 20	M10 X 25
M082408	80		
M082410	100		
M082505	50	25 X 25	M10 X 30
M082508	80		
M082510	100		
M083010	100	30 X 30	
M083210	100	32 X 25	



NAAMS CODE	L ± 0.3	B (h9) X H	SOCKET HEAD CAP SCR. REQ'D
M092008	80	20 X 12	M10 X 30
M092012	125		
M093205	50	32 X 18	
M093208	80		
M093210	100		

MATERIAL: STEEL MIN 340 MPa

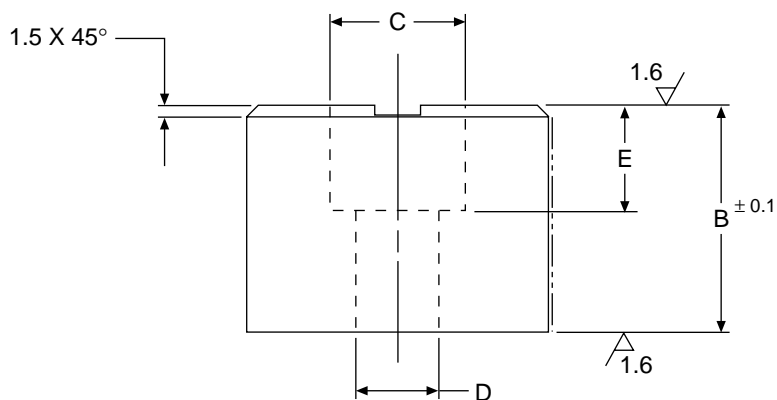
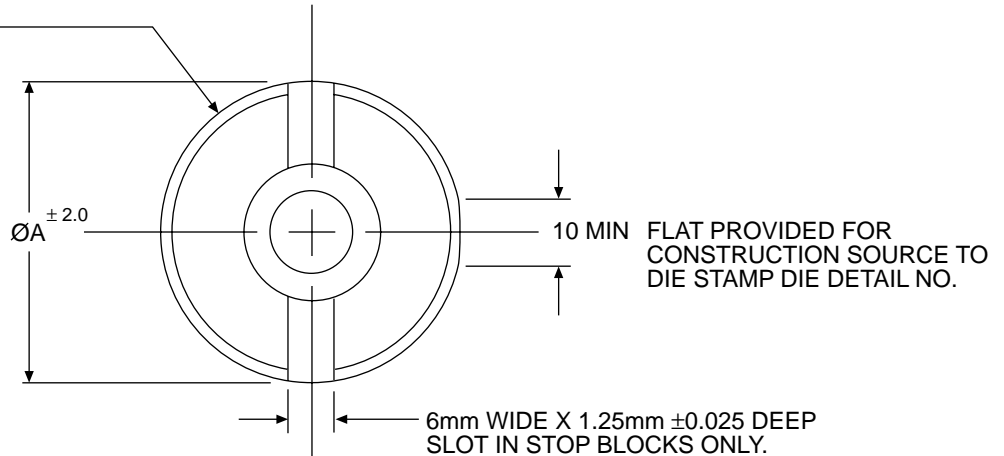
BREAK ALL CORNERS

A

STOP BLOCKS

(M10 SERIES)

PERMANENTLY MARK NAAMS
 PART NUMBER AND
 MANUFACTURER'S BRAND
 ON SIDE OF STOP BLOCK,
NOT ON FLAT.



NAAMS CODE	$\varnothing A$	B	$\varnothing C$	$\varnothing D$	$\varnothing E$
M100403	40	30	18	11.0	20
M100605	60	50	20	13.5	20
M100610	60	100	20	13.5	24
M100805	80	50	20	13.5	20
M101005	100	50	20	13.5	20

MATERIAL: STEEL

FLANGE STRIPPER WITH COIL SPRING

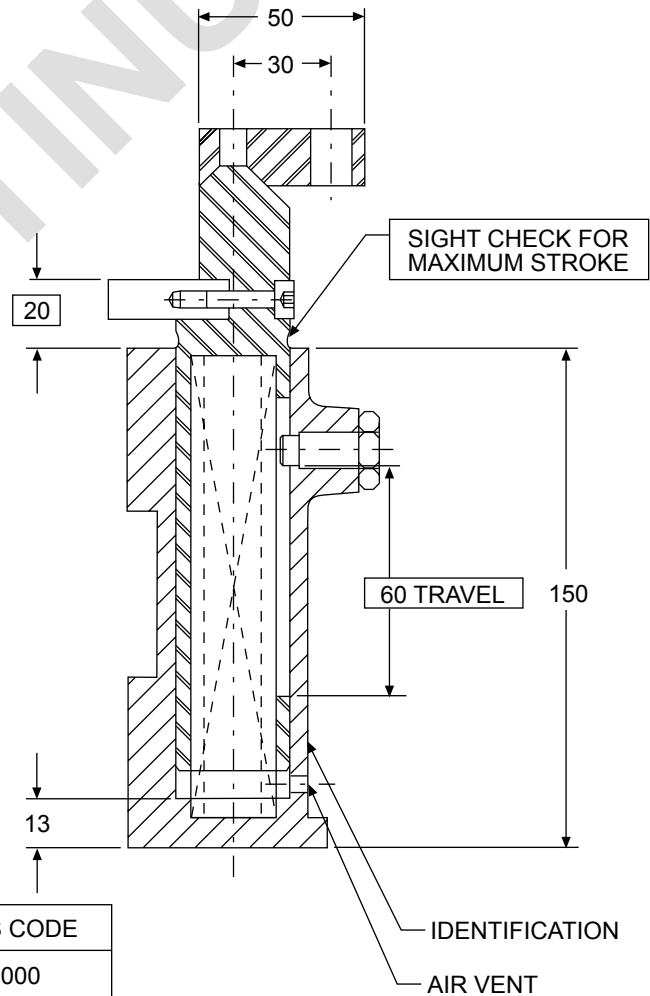
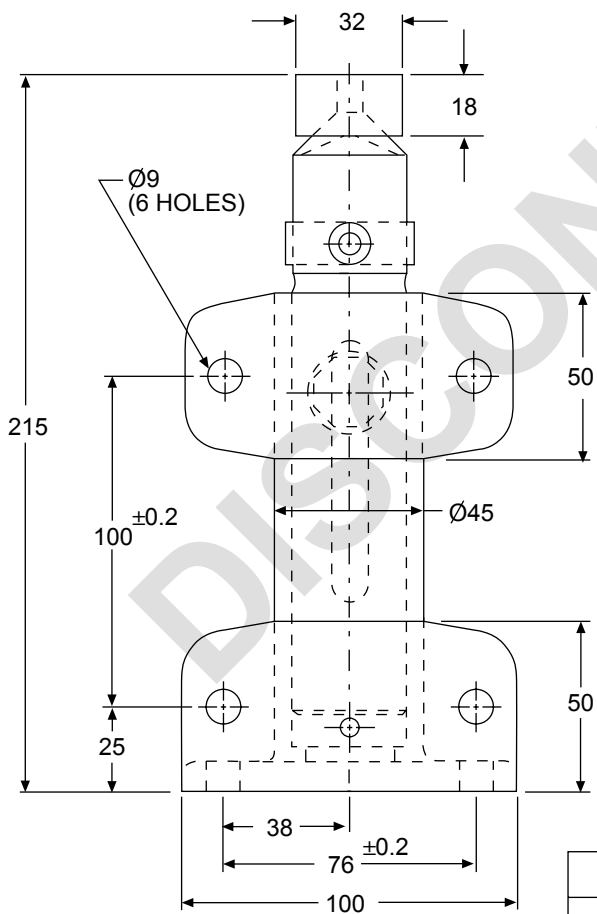
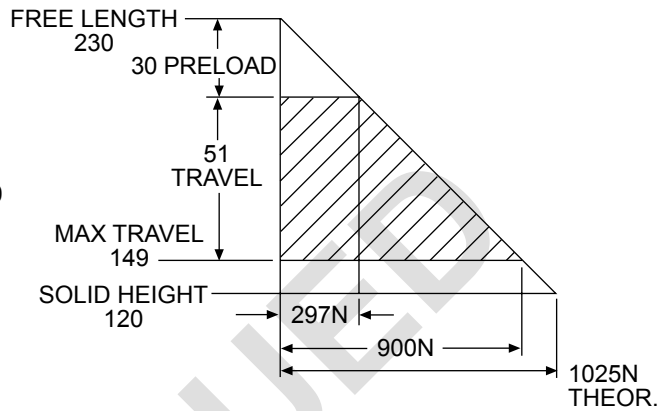
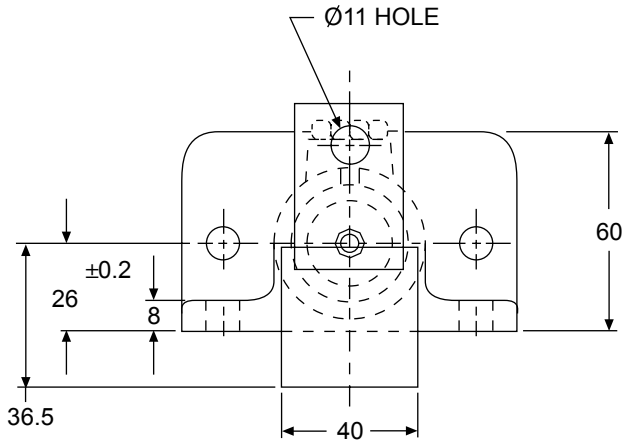
(M11 SERIES)

GLOBAL STANDARD COMPONENTS



Stamping

08/23/06



NAAMS CODE
M110000

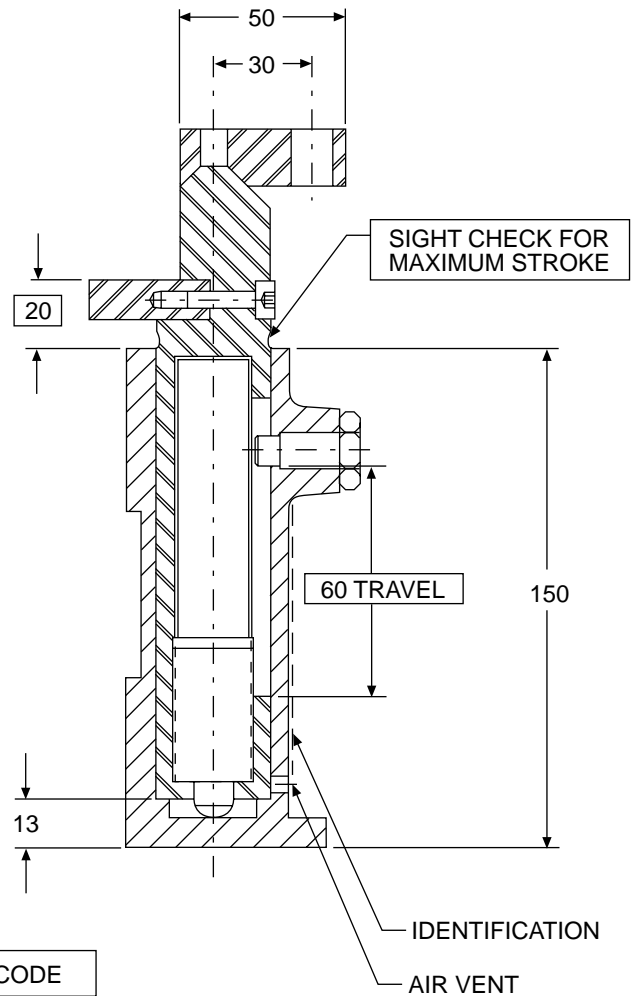
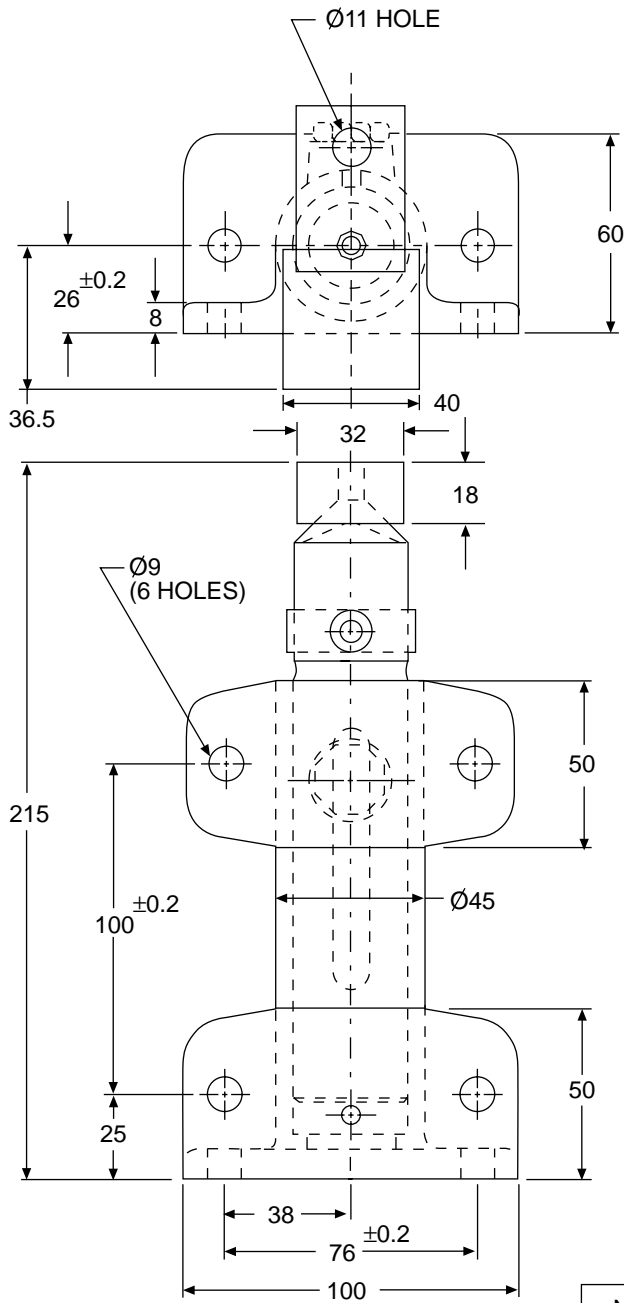
IDENTIFICATION:

EACH PART MUST BE PERMANENTLY MARKED WITH THE FULL ORDERING NUMBER AND MANUFACTURER'S BRAND.

A

FLANGE STRIPPER WITH GAS SPRING

(M12 SERIES)



NAAMS CODE
MI20000

CAUTION:
 USE SELF-CONTAINED NITROGEN SPRING
 WITH MAX. 20 BAR FILLING PRESSURE

IDENTIFICATION:
 EACH PART MUST BE PERMANENTLY MARKED WITH THE FULL ORDERING NUMBER
 AND MANUFACTURER'S BRAND.

FLANGE STRIPPER ASSEMBLY

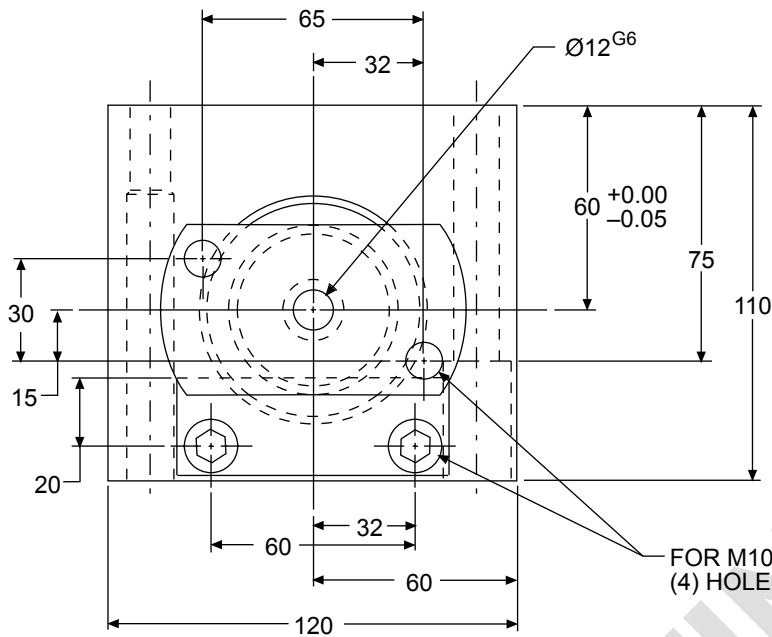
(M13 SERIES)

GLOBAL STANDARD COMPONENTS



Stamping

08/23/06



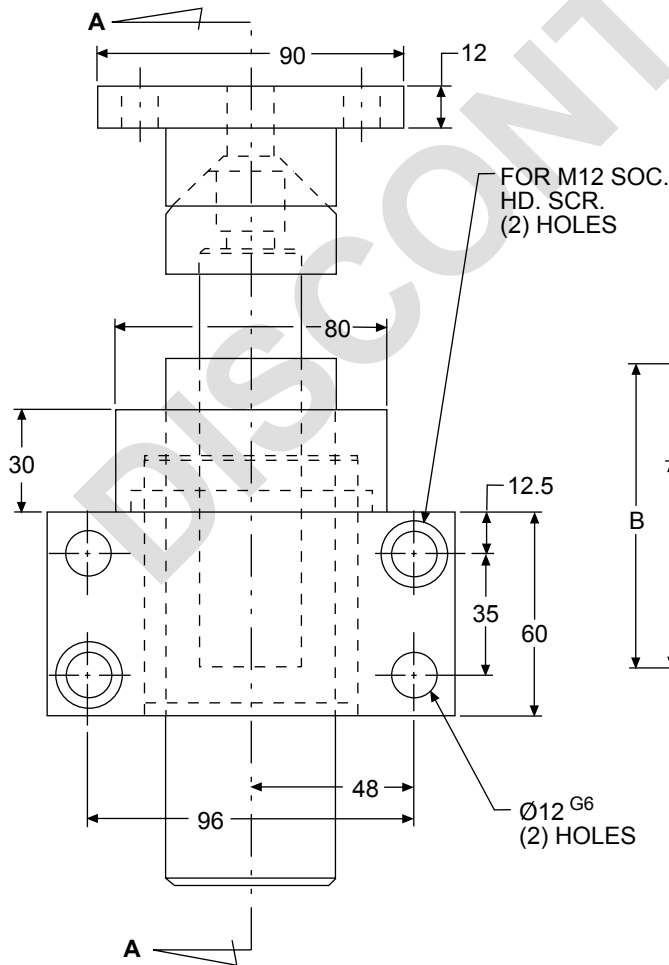
NAAMS CODE
MI30000

FLANGE STRIPPER ASSEMBLY
CONSISTS OF:

- (A) LOCATING CONE UNIT M130010
- (B) GUIDE SHAFT M130020
- (C) BUSHING BLOCK M130030
- (D) RETAINER AND GUIDE BLOCK M130040
- (E) BUSHING G615071

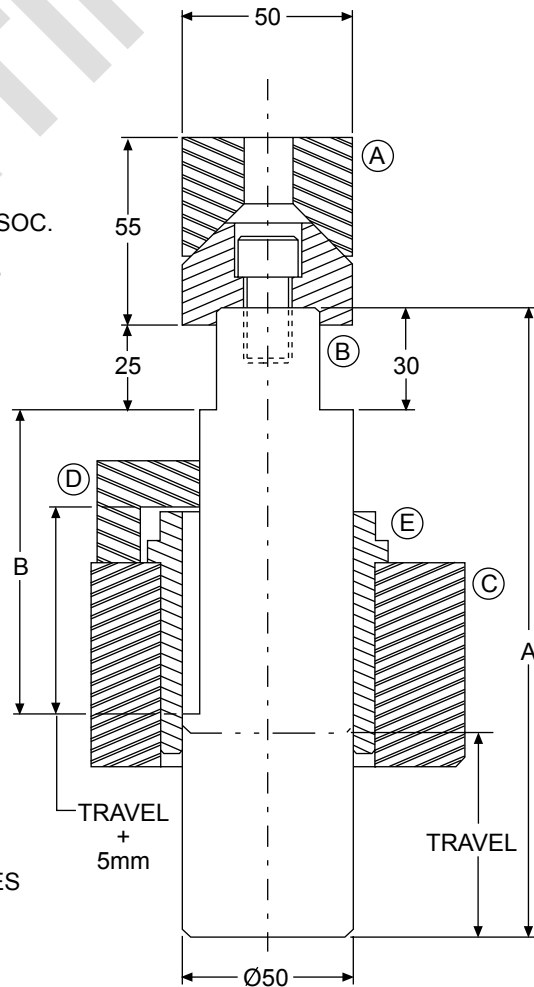
• SEE FOLLOWING PAGES FOR DETAILS

FOR M10 SOC. HD. SCR.
(4) HOLES



FOR M12 SOC.
HD. SCR.
(2) HOLES

Ø12 G6
(2) HOLES



SECTION A-A

A

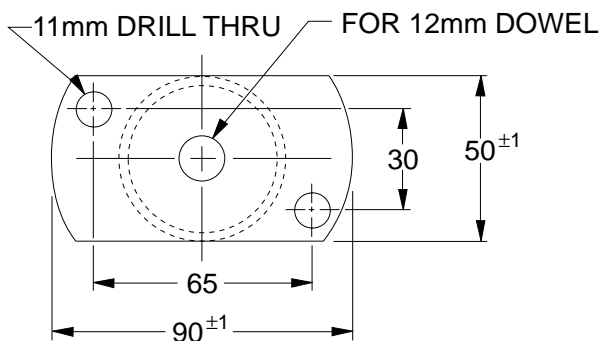
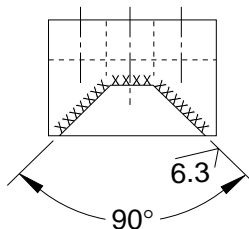
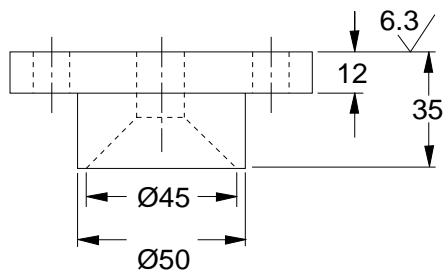
B

FLANGE STRIPPER ASSEMBLY LOCATING CONE UNIT

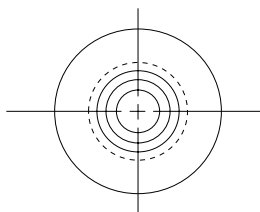
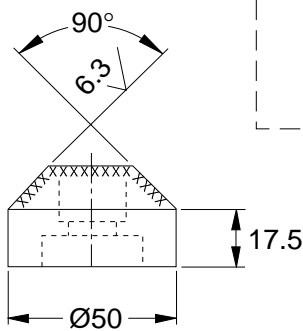
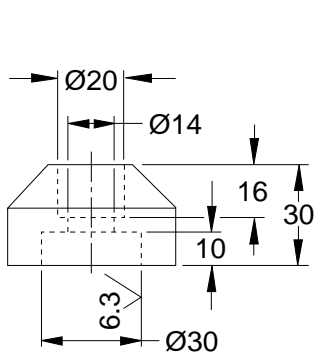
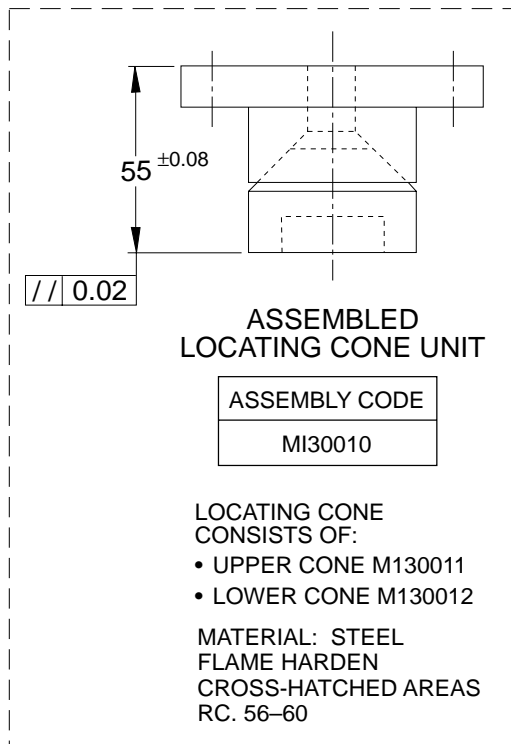
(M13 SERIES)

Stamping

12/15/00



NAAMS CODE
MI30011



NAAMS CODE
MI30012

FLANGE STRIPPER ASSEMBLY GUIDE SHAFT

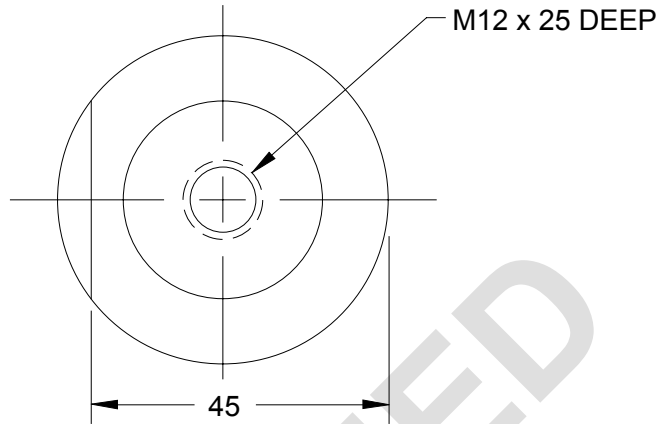
(M13 SERIES)

GLOBAL STANDARD COMPONENTS

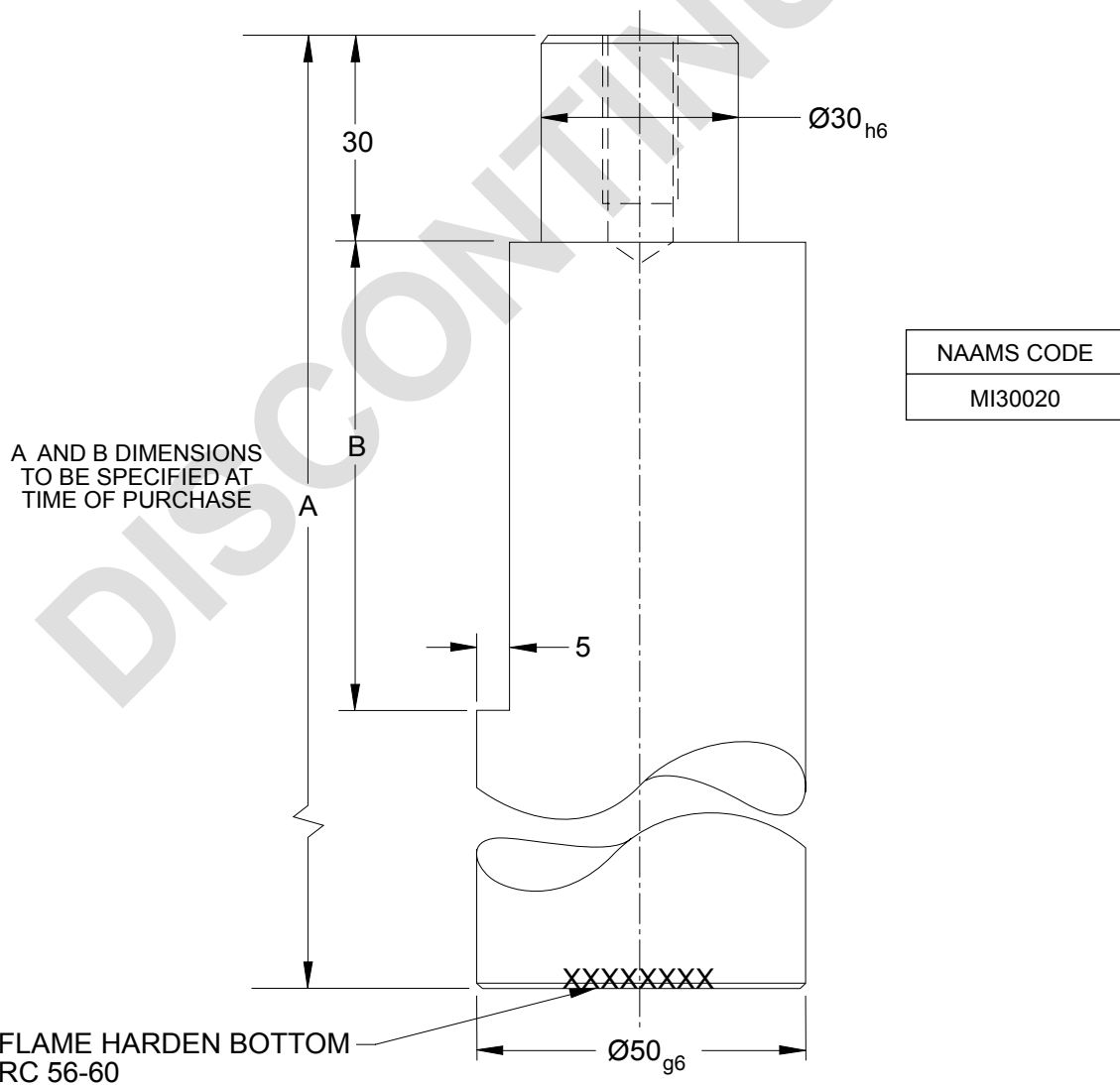


Stamping

08/23/06



MATERIAL: STEEL



A

FLANGE STRIPPER ASSEMBLY BUSHING BLOCK

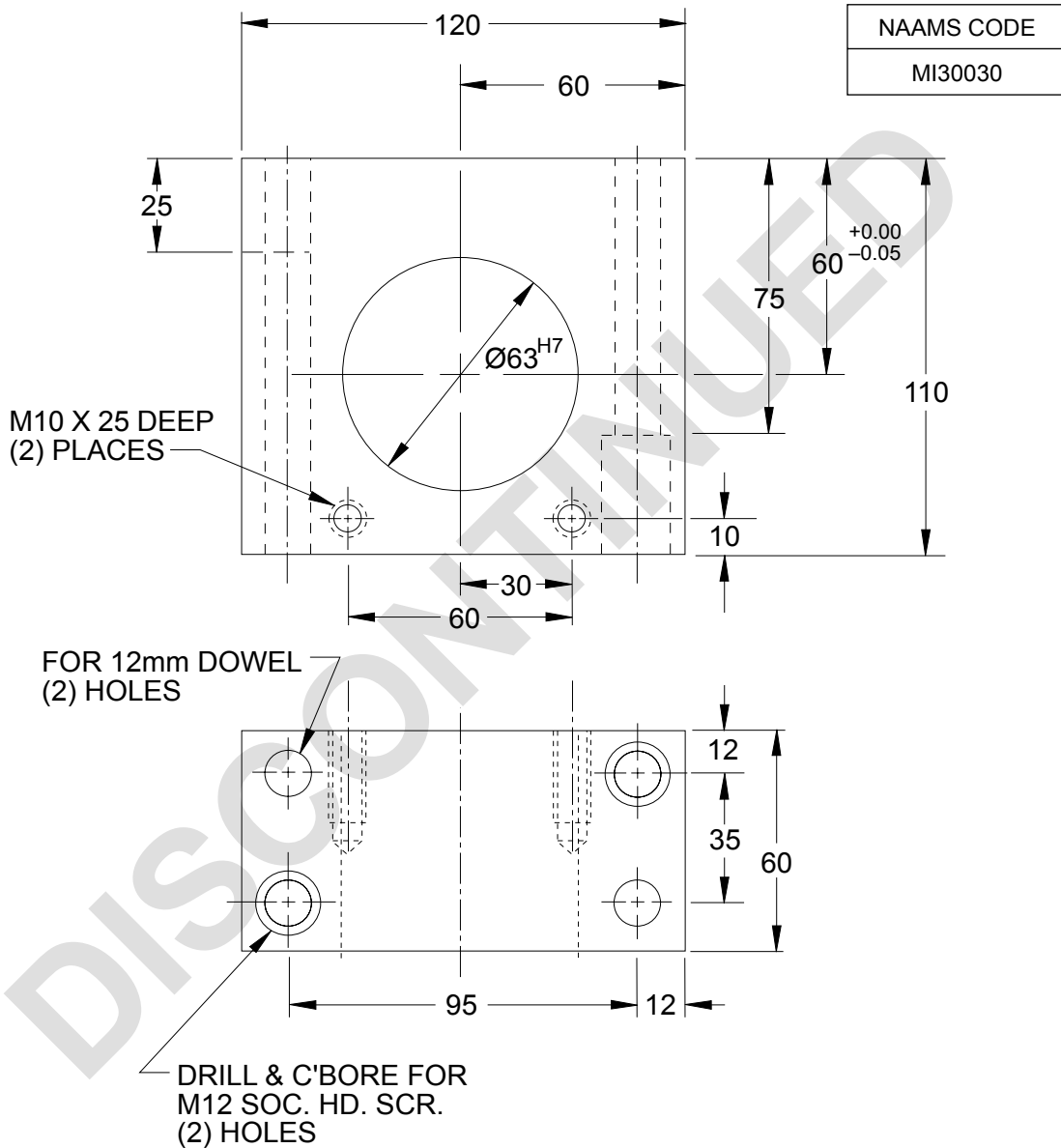
(M13 SERIES)

GLOBAL STANDARD COMPONENTS



Stamping

08/23/06



A

MATERIAL: STEEL

FLANGE STRIPPER ASSEMBLY RETAINER AND GUIDE BLOCK

(M13 SERIES)

GLOBAL STANDARD COMPONENTS

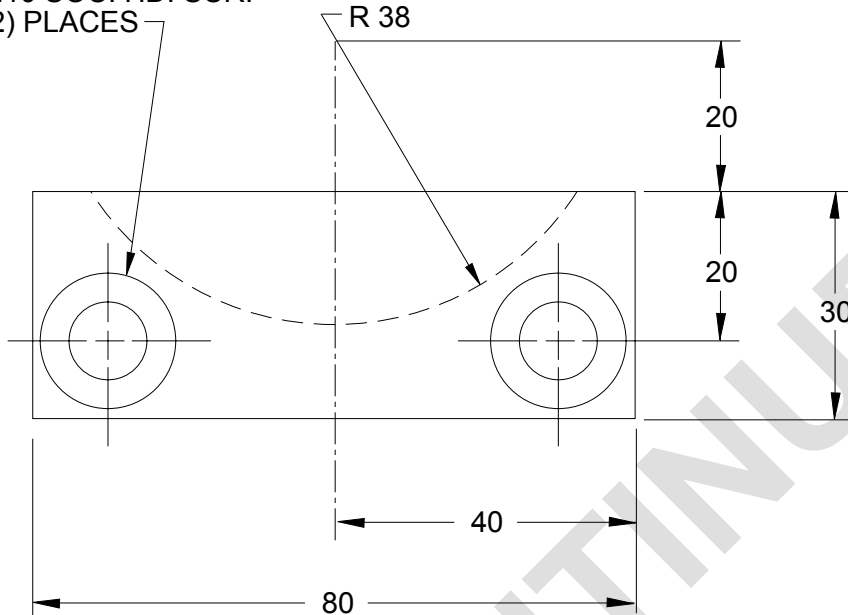
NAAMS



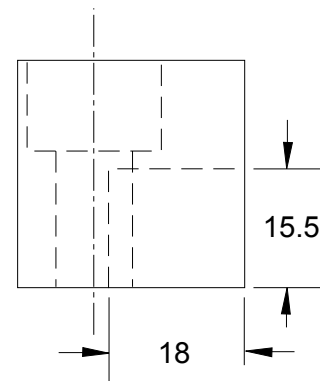
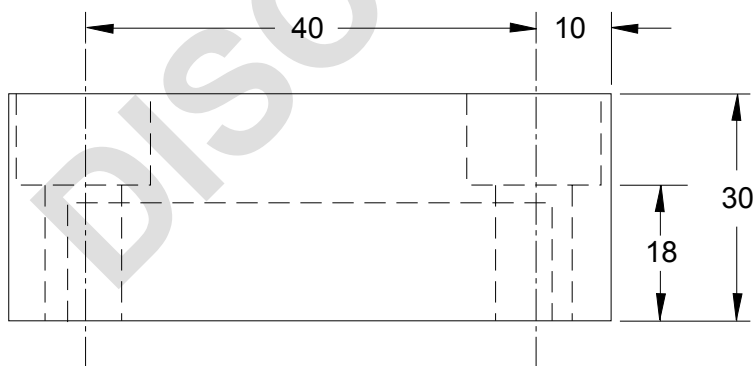
Stamping

08/23/06

DRILL AND C'BORE FOR
M10 SOC. HD. SCR.
(2) PLACES



NAAMS CODE
MI30040

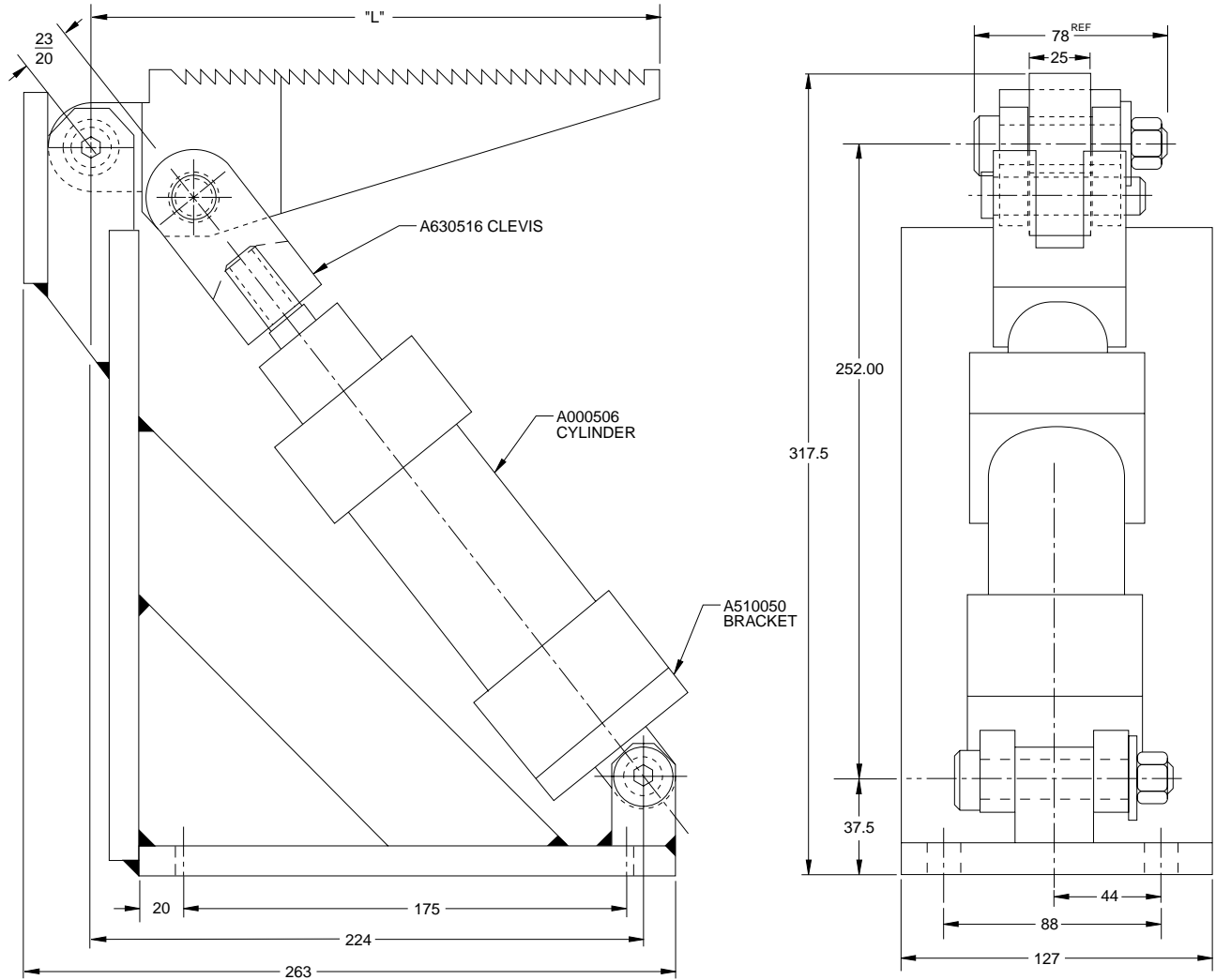


RETAINER & GUIDE BLOCK
MATERIAL: STEEL

A

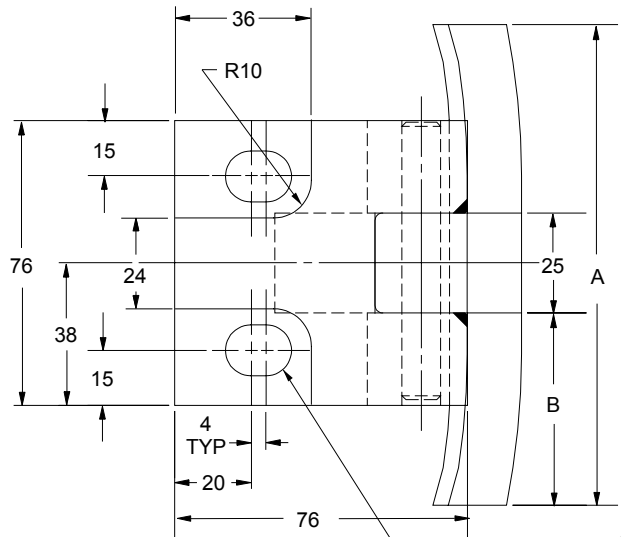
STOCK CROWDER

(M17 SERIES)

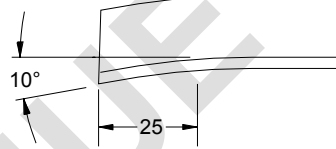


NAAMS CODE	L
M170230	230
M170280	280
M170330	330
M170380	380

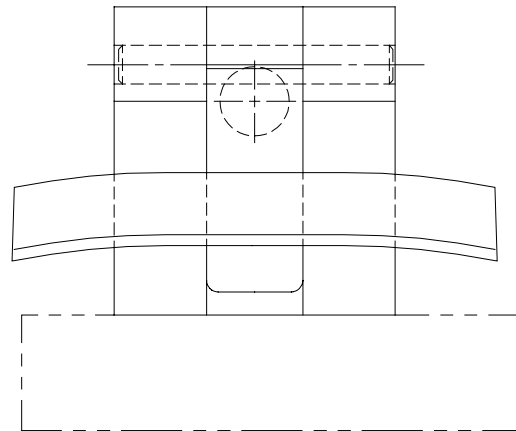
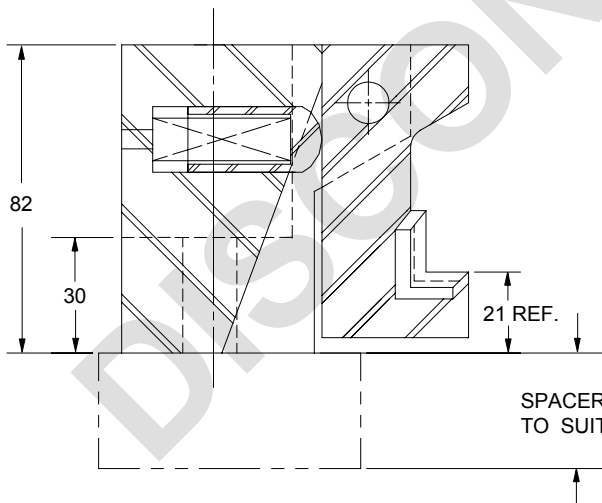
BLANK SUPPORT (M18 Series)



FOR M12mm SOCKET
HEAD CAP SCREW



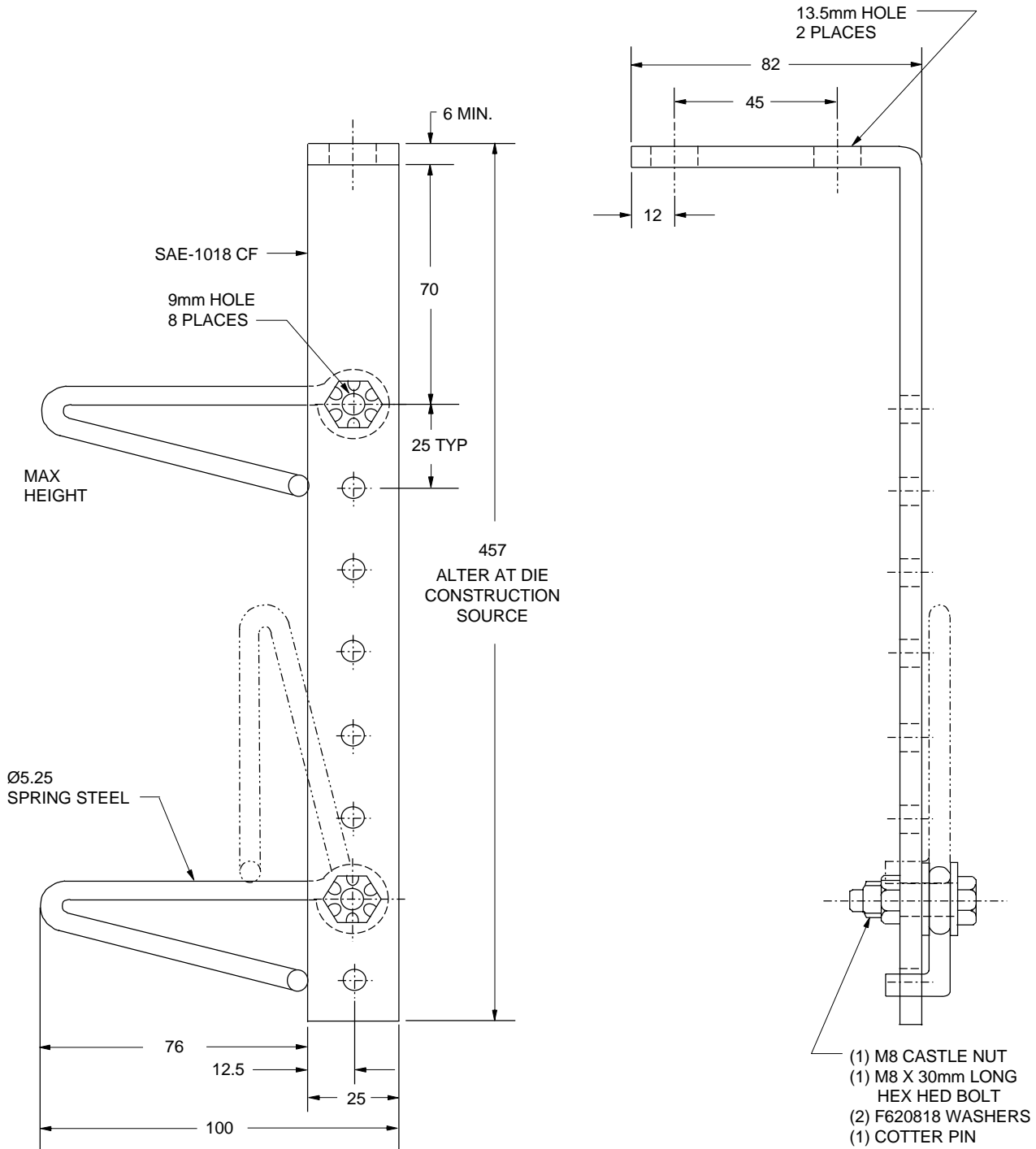
A



NAAMS CODE	A	B
M181205	125	50
M182511	255	115
M183817	381	178

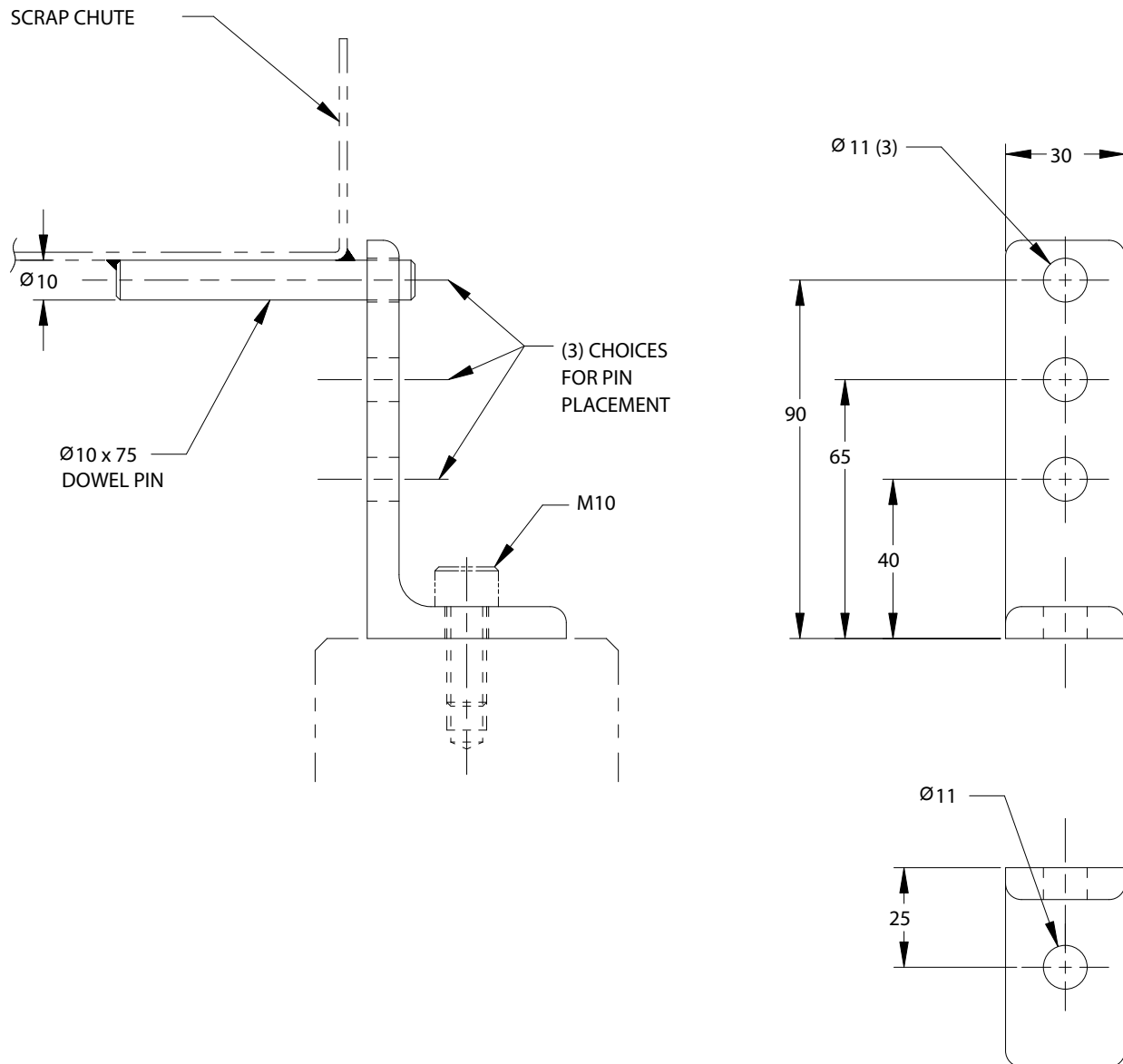
SCRAP FLIPPER

M190001



SCRAP CHUTE BRACKET M200001

*MATERIAL: Angle Iron - 8 x 50 x 100 x 30



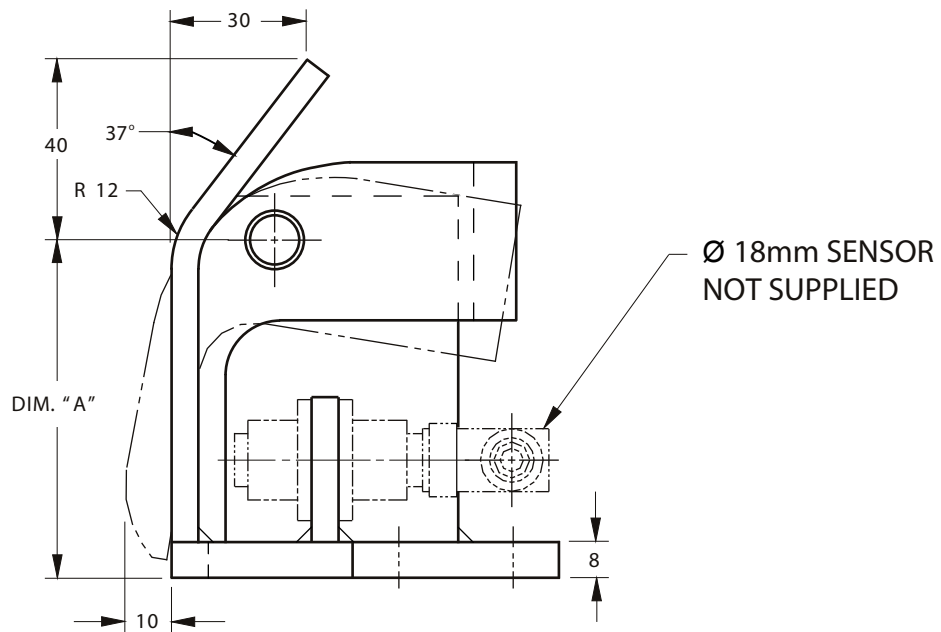
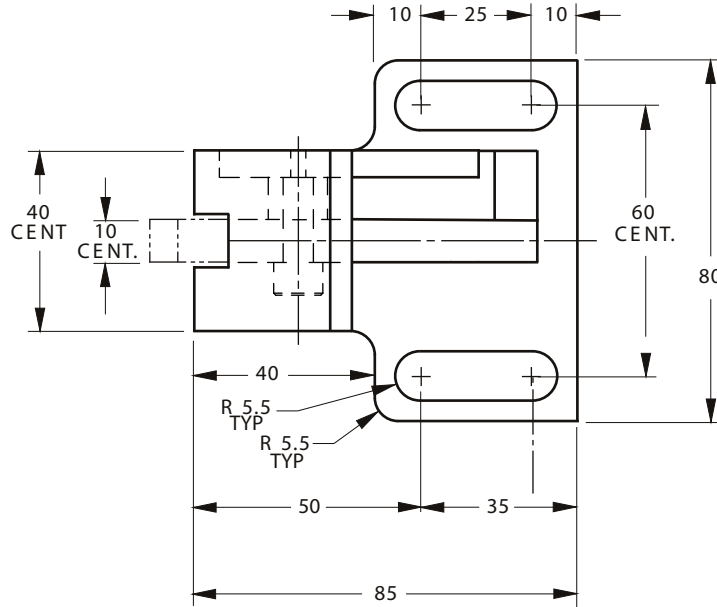
18MM BLANK SENSOR (M21 SERIES)

GLOBAL STANDARD COMPONENTS



Stamping

06/07/07



FASTENERS

2	M10 x 30 SOCKET HEAD CAP SCREWS F011012
2	M10 SAE LOCK WASHERS
2	M10 SAE FLAT WASHERS

NAAMS CODE	DIM "A"
M210075	75
M210100	100
M210150	150

FLANGE STRIPPER AIR ACTIVATED

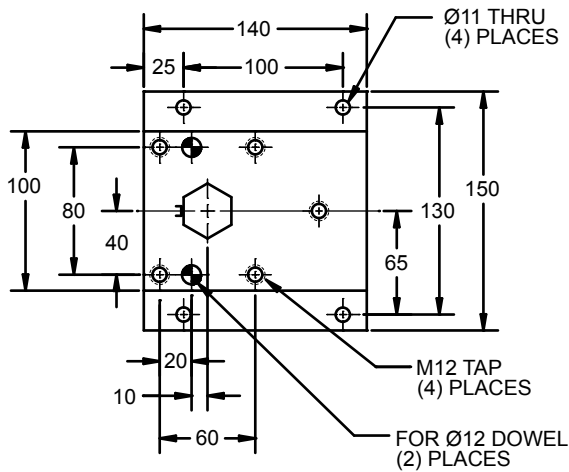
(M22 SERIES)

GLOBAL STANDARD COMPONENTS

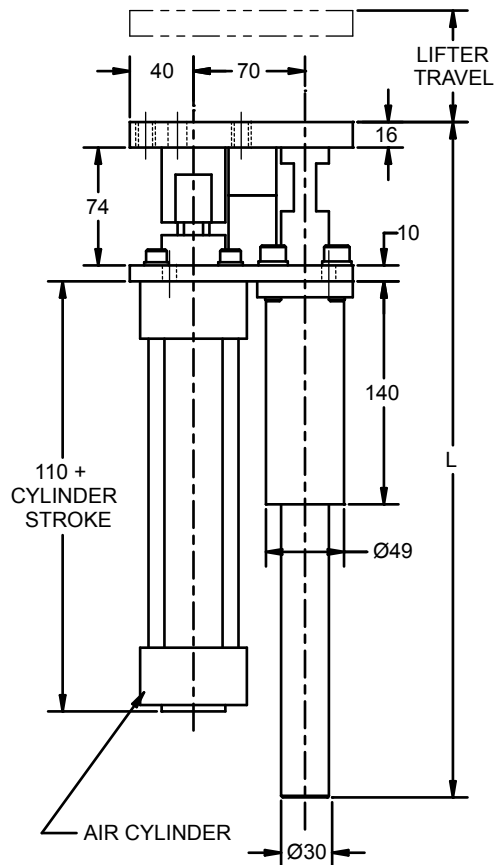


Stamping

09/16/08



NAAMS CODE	CYLINDER STROKE	LIFTER TRAVEL	L
M220807	80	70	344
M221009	100	90	364
M221615	160	150	424
M222019	200	190	464



A

B

LIFT RAIL ASSEMBLY

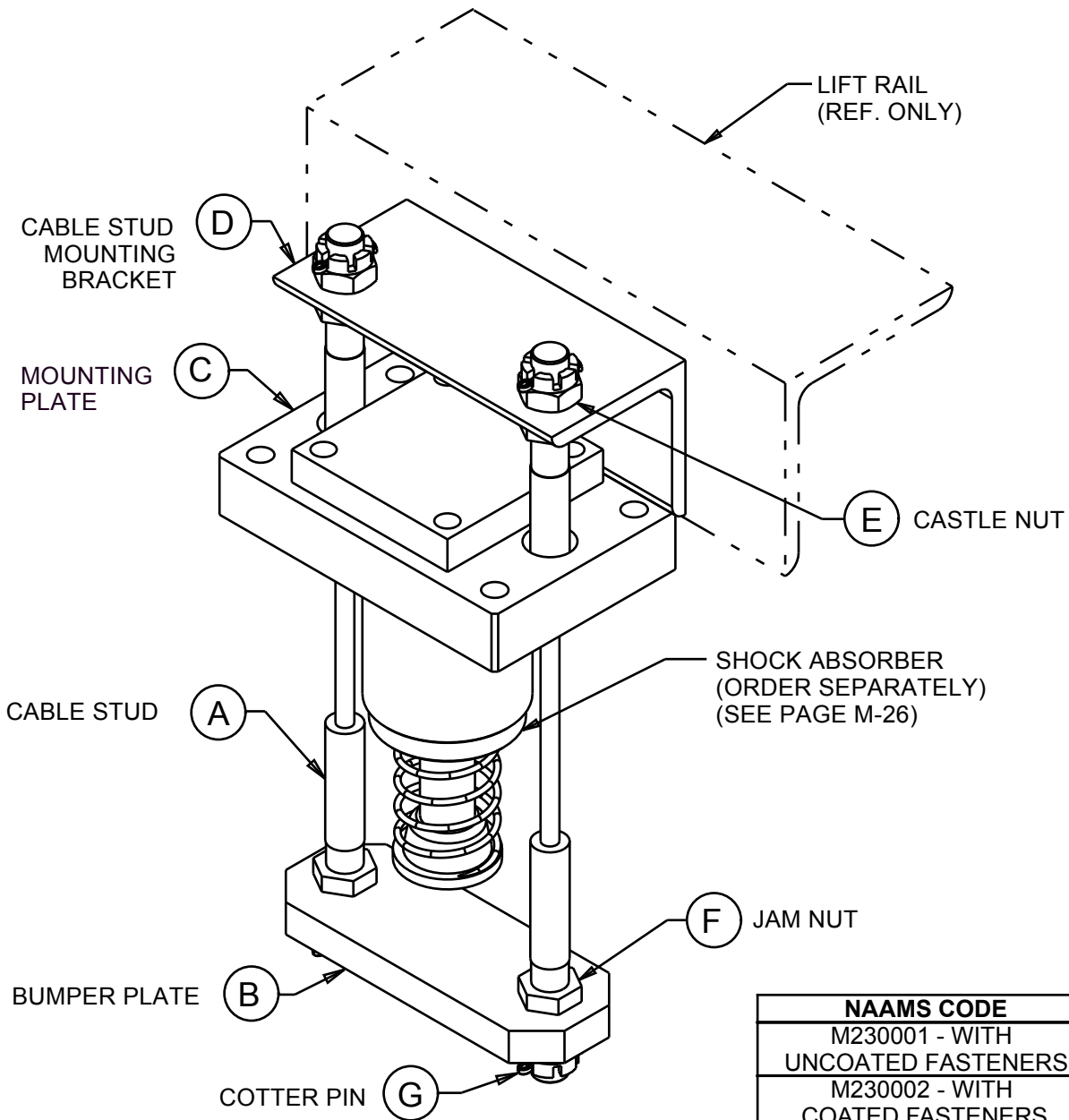
(M23 SERIES)

GLOBAL STANDARD COMPONENTS

TM **NAAMS** 

Stamping

10/20/10



NAAMS CODE	
M230001	- WITH UNCOATED FASTENERS
M230002	- WITH COATED FASTENERS

DET.	QUAN.	NAME	NAAMS CODE/ SPECIFICATION	PAGE REF.
A	2	CABLE STUD	M230010	M-24
B	1	BUMPER PLATE	M230011	M-25
C	1	MOUNTING PLATE	M230012	M-24
D	1	CABLE STUD MOUNTING BRACKET	M230013	M-25
E	4	CASTLE NUT	F922430 (UNCOATED) F922430B (COATED)	---
F	4	JAM NUT	F472243 (UNCOATED) F472243B (COATED)	F-17
G	4	COTTER PIN	F9305050	---

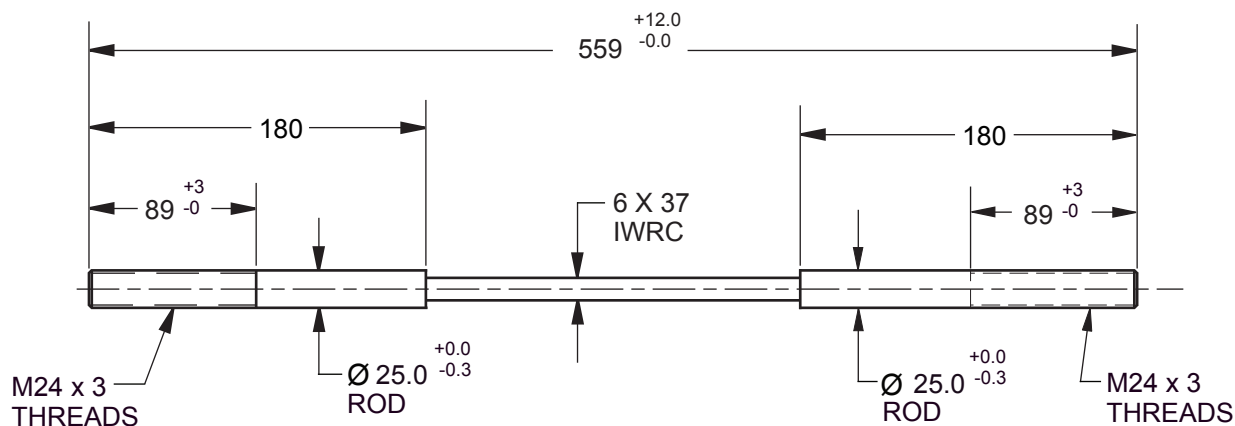
LIFTER RAIL CABLE STUD & MOUNTING PLATE

GLOBAL STANDARD COMPONENTS

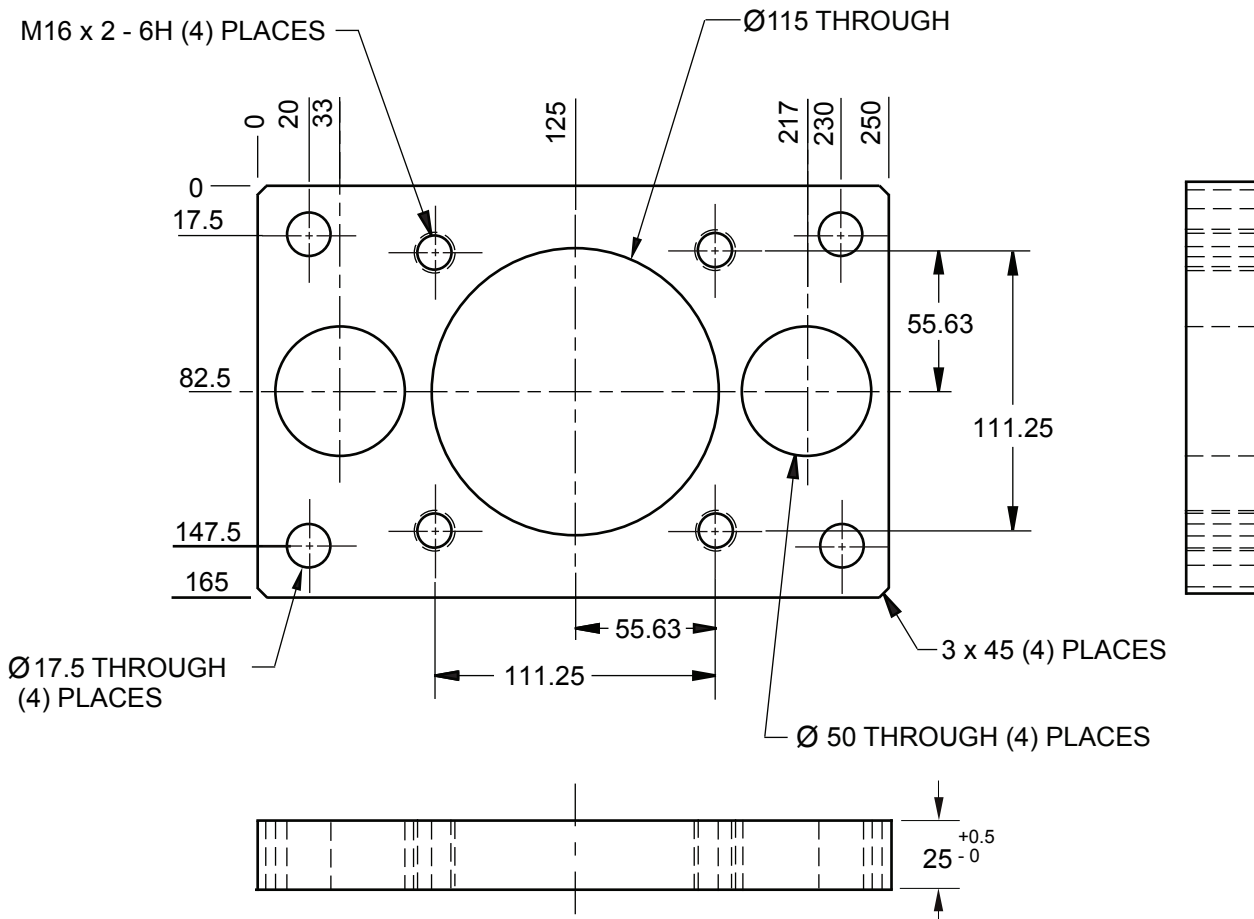


Stamping

10/20/10

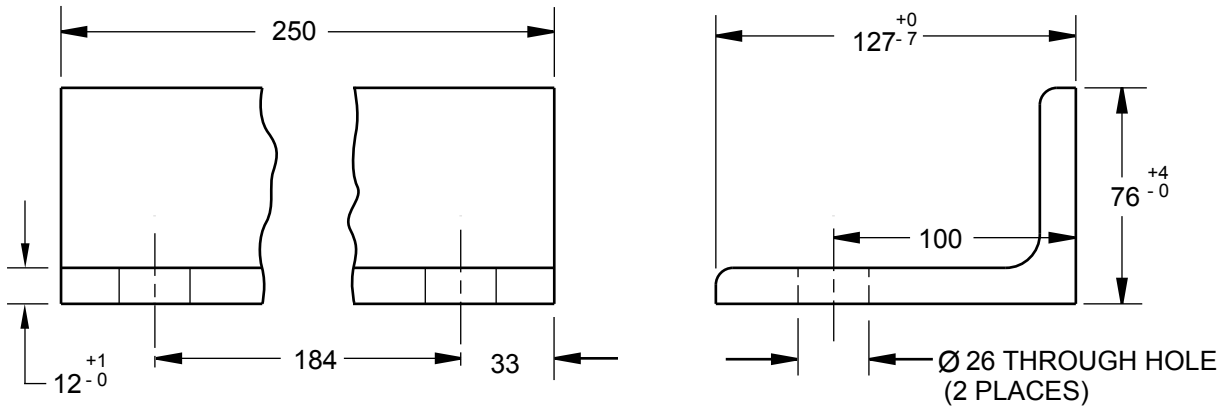


CABLE STUD
NAAMS CODE M230010

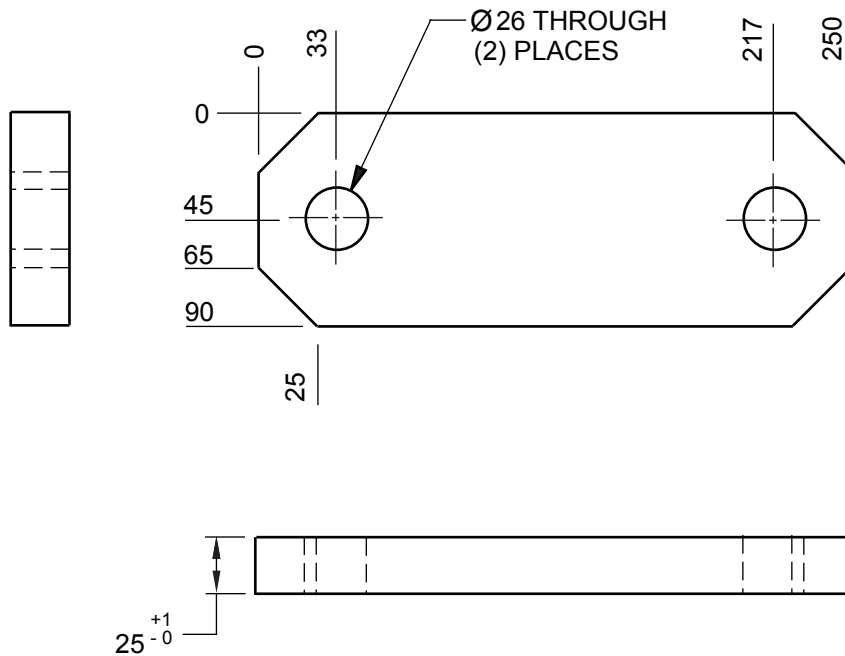


MOUNTING PLATE
NAAMS CODE M230012

LIFT RAIL CABLE STUD MOUNTING BRACKET & BUMPER PLATE



CABLE STUD MOUNTING BRACKET
 NAAMS CODE M230013



BUMPER PLATE
 NAAMS CODE M230011

LIFTER RAIL SHOCK ABSORBER

(M230021)

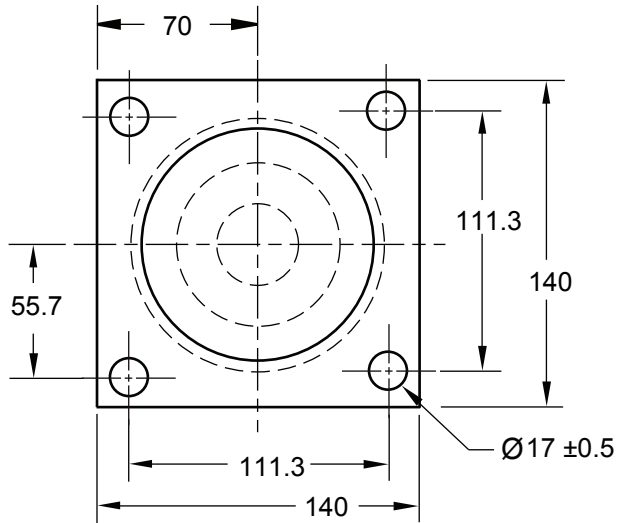
GLOBAL STANDARD COMPONENTS



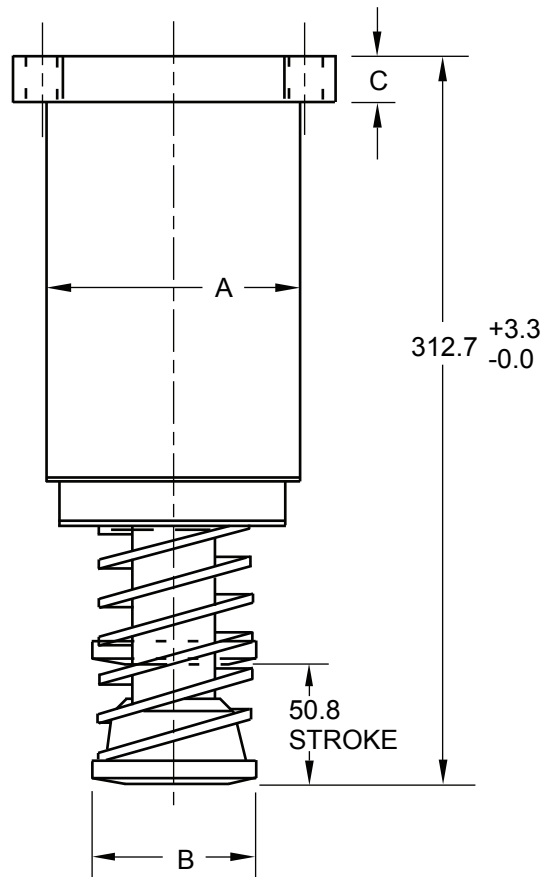
Stamping

10/20/10

- Shock absorber unit to be supplied with mount attached.
- Energy dissipation 3520 N-m/cycle minimum.



	MAX. DIM.	MIN. DIM.
A	114.3	108
B	88.1	70
C	25.4	19.1



SHOCK ABSORBER

BLANK SUPPORT

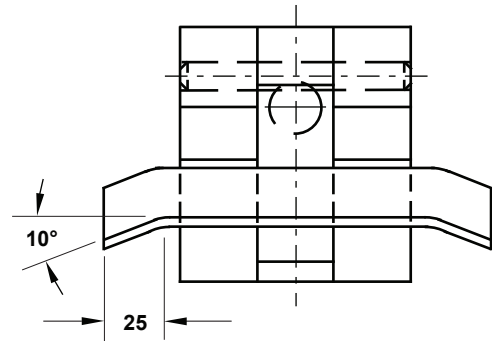
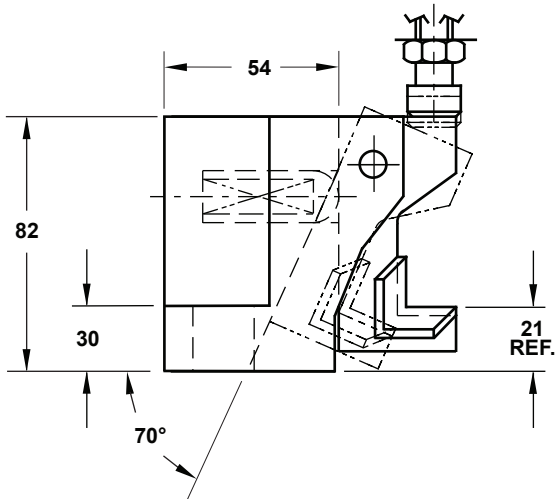
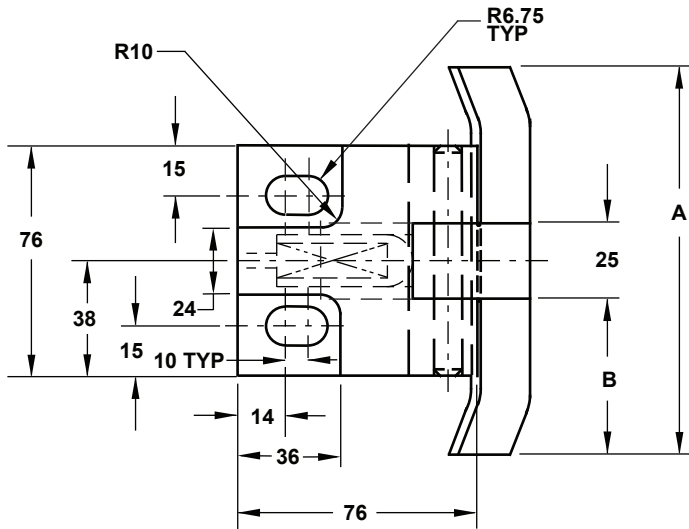
(M27 SERIES)

GLOBAL STANDARD COMPONENTS



Stamping

08/01/11



NAAMS CODE	A (mm)	B (mm)
M271205	125	50
M272511	255	115
M273817	381	178

NOTES AND SPECIFICATIONS:

MATERIAL: STEEL